



**Engineered Systems Associates
Mechanical Engineers**

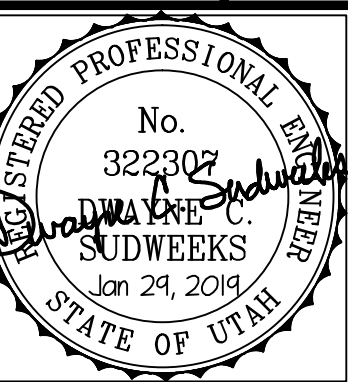
Dwayne Sudweeks
1355 East Center - Pocatello, Idaho 83201
Phone: (208) 233-0501 Fax: (208) 233-0529 email: esa@engsystems.com

STRATA APARTMENTS
LOGAN, UTAH

TYP. APTS. MECH. FLOOR PLANS

PROJECT:

SHEET TITLE:

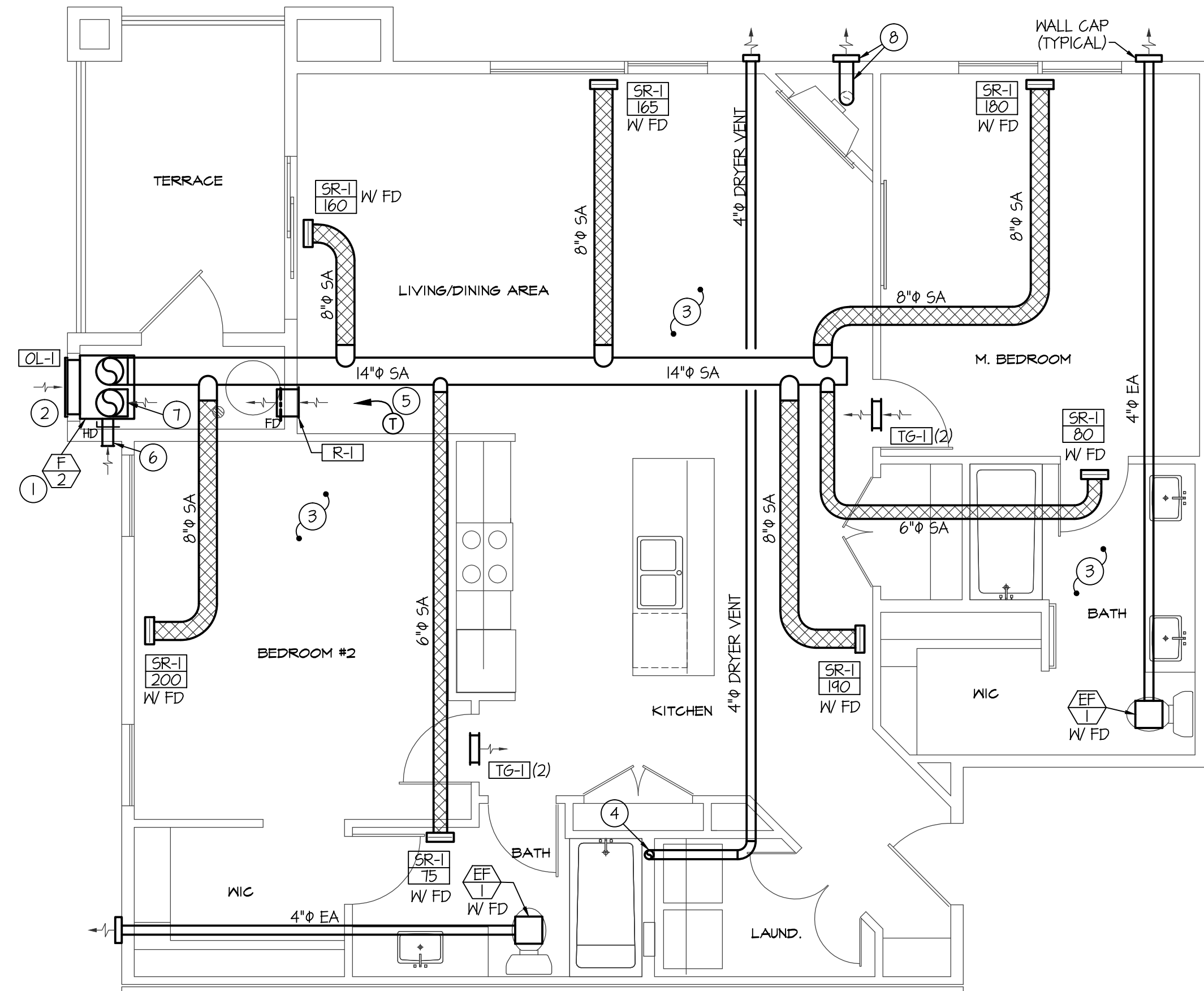


DRWN. BY: SR	CKD. BY: DCS
JOB NO. 18043	DATE: DEC. 2018

SHEET:
M200
OF: THREE

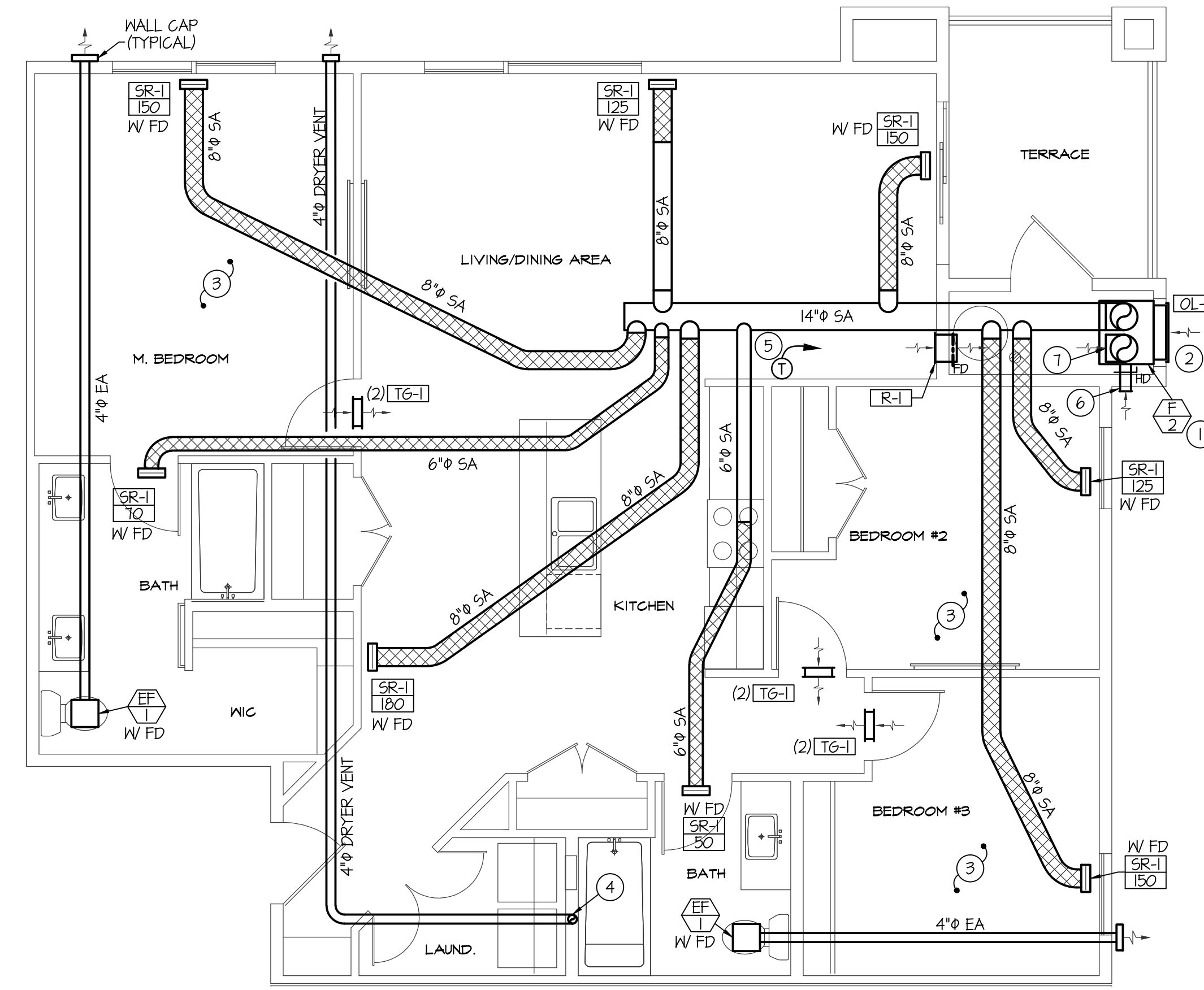
PLAN NOTES:

1. INSTALL SELF-CONTAINED HVAC UNIT AS SPECIFIED IN FURNACE ROOM. COORDINATE ACTUAL LOCATION WITH OUTSIDE LOUVER AND PIPING. MAINTAIN AS MUCH CLEARANCE IN FRONT OF UNIT AS POSSIBLE. RUN 3/4" CONDENSATE DRAIN LINE FROM UNIT TO FLOOR DRAIN. REFER TO PLUMBING DRAWINGS FOR CONNECTION TO GAS PIPING. PROVIDE EXTENSION ON COMBUSTION DISCHARGE AS REQUIRED TO MOUNT AT UPPER PORTION OF LOUVER.
2. LOUVERS FURNISHED WITH SELF-CONTAINED HVAC UNITS. PROVIDE SLEEVE THRU WALL AS REQUIRED FOR LOUVERS. COORDINATE LOUVER LOCATION WITH UNIT AND PIPING. SEAL ALL AROUND LOUVERS. EXTEND COMBUSTION DISCHARGE TO UPPER SECTION OF LOUVER. MOUNT UPPER LOUVER SECTION WITH BLADE POINTING UPWARD AND LOWER LOUVER SECTION WITH BLADES POINTING DOWNWARD AS RECOMMENDED BY MANUFACTURER.
3. FIELD COORDINATE SPACE AVAILABLE FOR DUCTWORK. PROVIDE DUCT TRANSITIONS AS REQUIRED TO RUN DUCTS THRU STRUCTURE. UTILIZE JOIST SPACE WHERE POSSIBLE.
4. PROVIDE AND INSTALL DRYER WALL BOX IN WALL. DRYER BOX TO BE COMPLETE WITH 4" DUCT UP IN WALL TO WALL CAP. REFER TO DETAIL ON SHEET M02 FOR TYPICAL DRYER BOX INSTALLATION.
5. MOUNT PROGRAMMABLE THERMOSTAT ON WALL AND RUN 5 CONDUCTOR THERMOSTAT WIRE TO FURNACE.
6. INSTALL 4" OUTSIDE AIR DUCT FROM 6x6 LOUVER ON EXTERIOR WALL WITH DOWNTURNED 40° ELBOW AND LEAVE DUCT OPEN TO MECH. ROOM. INSTALL HAND DAMPER IN 4" DUCT AND BALANCE TO 75 CFM.
7. LEAVE RETURN AIR DUCT OPEN TO MECH. ROOM TO PROVIDE RETURN AIR TO SYSTEM.
8. INSTALL FIREPLACE FLUE(S) THRU SIDEMALL TO VENT TERMINATION AS REQUIRED BY MANUFACTURER. REFER TO MANUFACTURER'S DATA FOR SIZE AND TYPE OF FLUE MATERIAL.



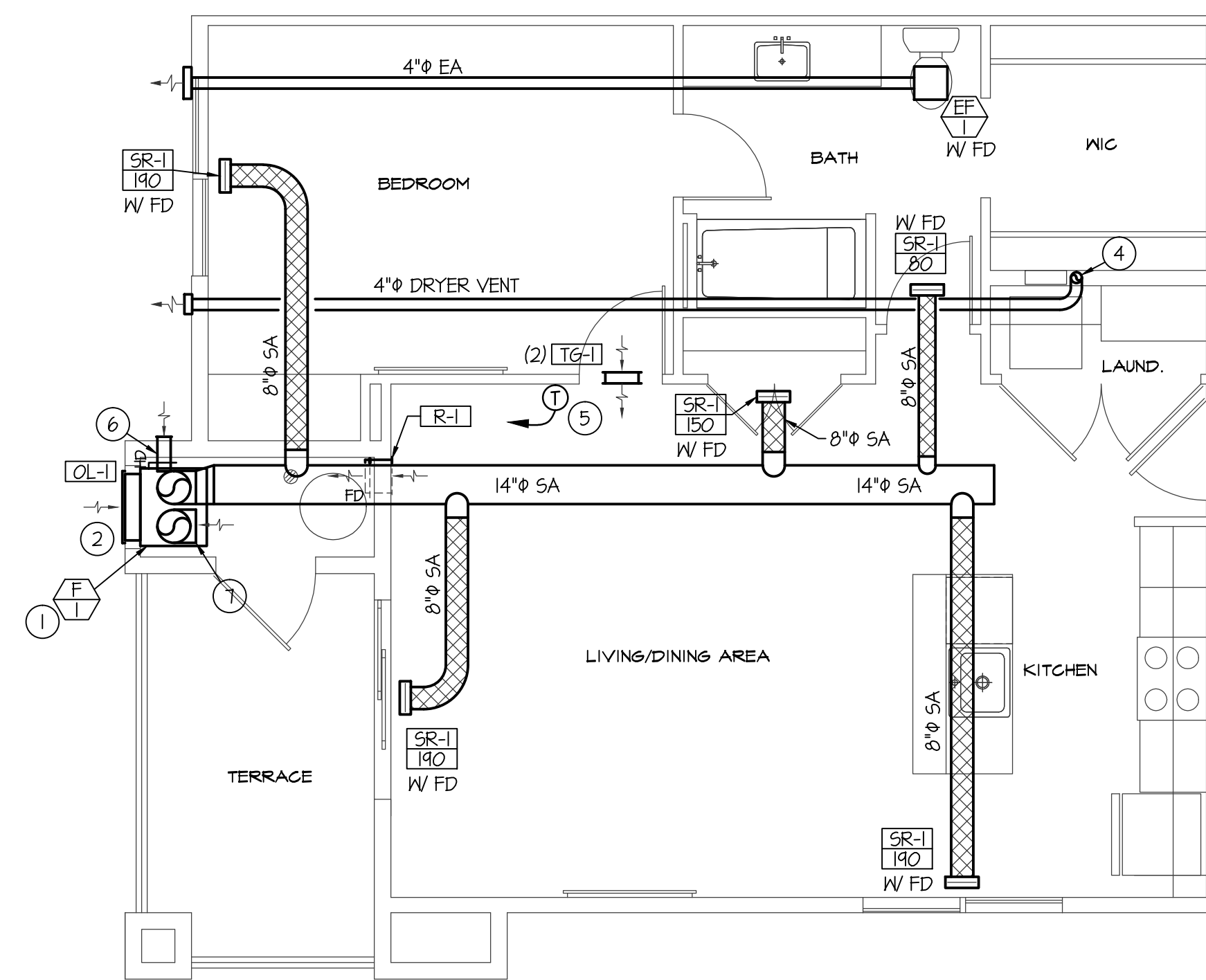
**TYPICAL 2 BEDROOM, 2 BATH LUXURY UNIT
LARGE SCALE MECHANICAL FLOOR PLAN**

SCALE: 1/4" = 1'-0"



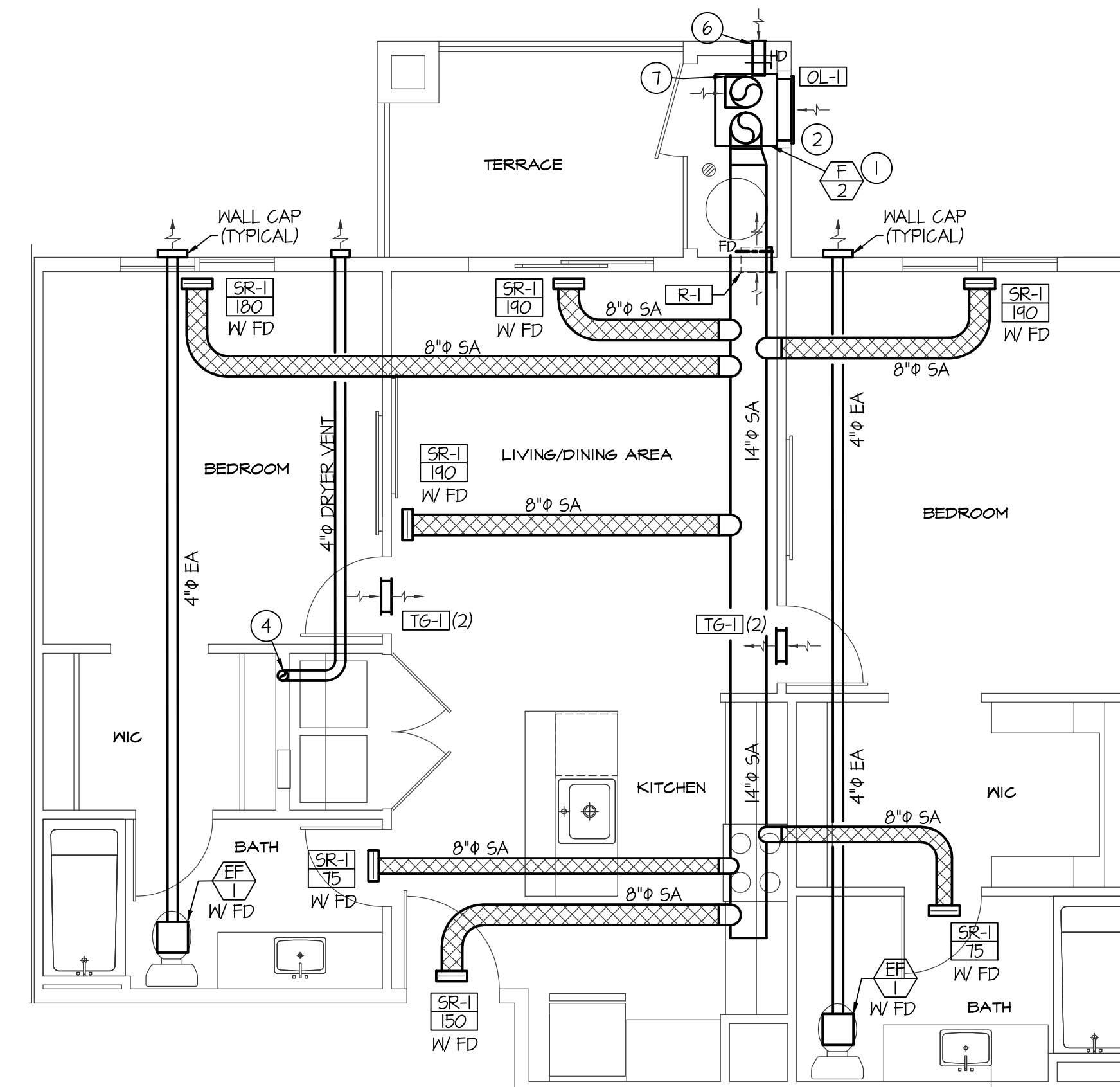
**TYPICAL 3 BEDROOM, 2 BATH UNIT
LARGE SCALE MECHANICAL FLOOR PLAN**

SCALE: 1/4" = 1'-0"



**TYPICAL 1 BEDROOM, 1 BATH UNIT
LARGE SCALE MECHANICAL FLOOR PLAN**

SCALE: 1/4" = 1'-0"



**TYPICAL 2 BEDROOM, 2 BATH UNIT
LARGE SCALE MECHANICAL FLOOR PLAN**

SCALE: 1/4" = 1'-0"